

CERTIFICATE OF LOCATION OF GOVERNMENT CORNER

NORTH QUARTER Corner of Section 4, Township 106, Range 40, 5TH P.M.

STATE OF MINNESOTA, County of MURRAY

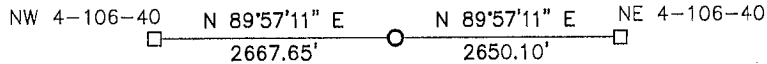
At the corner location shown on the sketch:

- On _____ found a _____
DATE
- left monument as found, lowered monument, removed monument (explain)
- On 5/23/13 placed a survey spike w/seal #50343
DATE

SKETCH OF REFERENCE TIES



FIELD LINE



FIELD APPROACH

- X
- X
- X

Minnesota State Plane Coordinate
 System Murray County Datum
 NAD83 (1996)
 N: 163449.729
 E: 529862.908

Statement of evidence relative to this corner location is on back of page.

I hereby certify that this document and the data contained herein was prepared by me or under my direct supervision.


 SIGNATURE _____ DATE 2-4-14

Registration No. 50343

- Land Surveyor, Professional Engineer
- County Surveyor, County Engineer

OFFICE OF THE COUNTY RECORDER

County of _____

I hereby certify that this document was filed in the Co. Recorders office at _____ .M on the _____ day of FEB 5 2014 A.D. 20 _____

County Recorder James V. Johnson
 By _____, Deputy

DOCUMENT NO. _____

Statement of Evidence

In 1861, J.W. Myers did the original survey of the north line of the township.

The Murray County Highway Department recorded ties at the corner.

On May 23, 2013, Bueltel-Moseng Land Surveying set a survey spike with seal #50343 on line in between section corners and in line with the fence to the south. It is in the centerline of the road and in line with field line to the north.